



# HIGH GAIN ANTENNA

Installation Manual



## HIGH GAIN ANTENNA INSTALLATION

### WARRANTY

This product is warranted against defects in materials and workmanship for the period specified in the warranty from the date of invoice.

### SERVICE

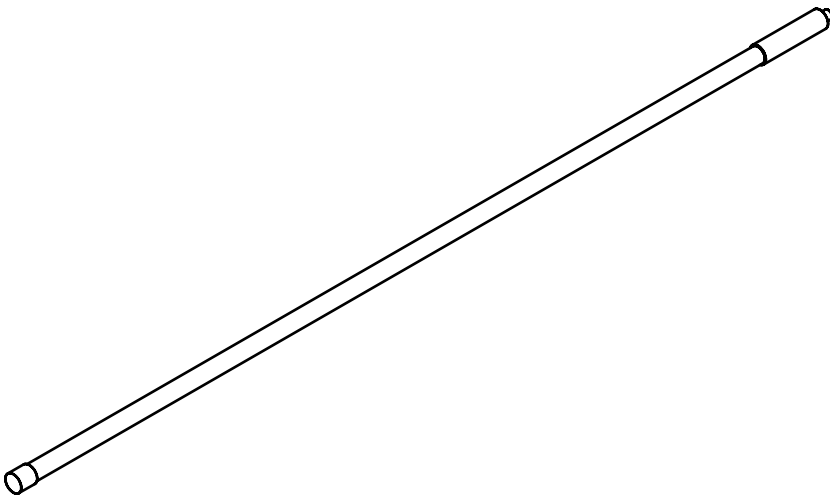
Technical Support is available 24 hours a day, 7 days a week.  
1-800-411-3136

<https://www.varsityscoreboards.com/support/contact-support.html>  
(link to fill out support request on website)



## A NOTE TO INSTALLERS

If you are installing this antenna for a client, please return the manual to the individual in charge of the scoreboard upon completion of installation.



### **ANTENNA DIMENSIONS**

Approximately 4' Long

# TABLE OF CONTENTS /

PRODUCT SPECIFICATIONS . . . . .5

CHOOSING AN INSTALL LOCATION . . . . .6

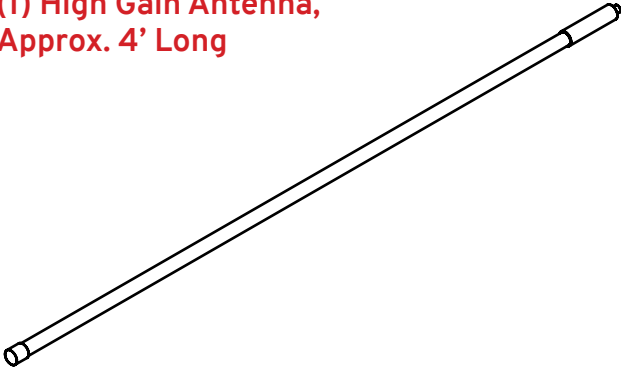
INSTALLING THE ANTENNA . . . . .7



## PRODUCT SPECIFICATIONS

### ITEMS INCLUDED

(1) High Gain Antenna,  
Approx. 4' Long



(1) Support Bracket [Aluminum]

(1) Set Screw Hardware Package  
for Support Bracket

(1) Antenna Interface Cable  
[Approx. 2' Long]

(1) Extension Cable for Antenna  
[Approx. 4' Long]

(1) U-Bolts for Pole Mount  
Application

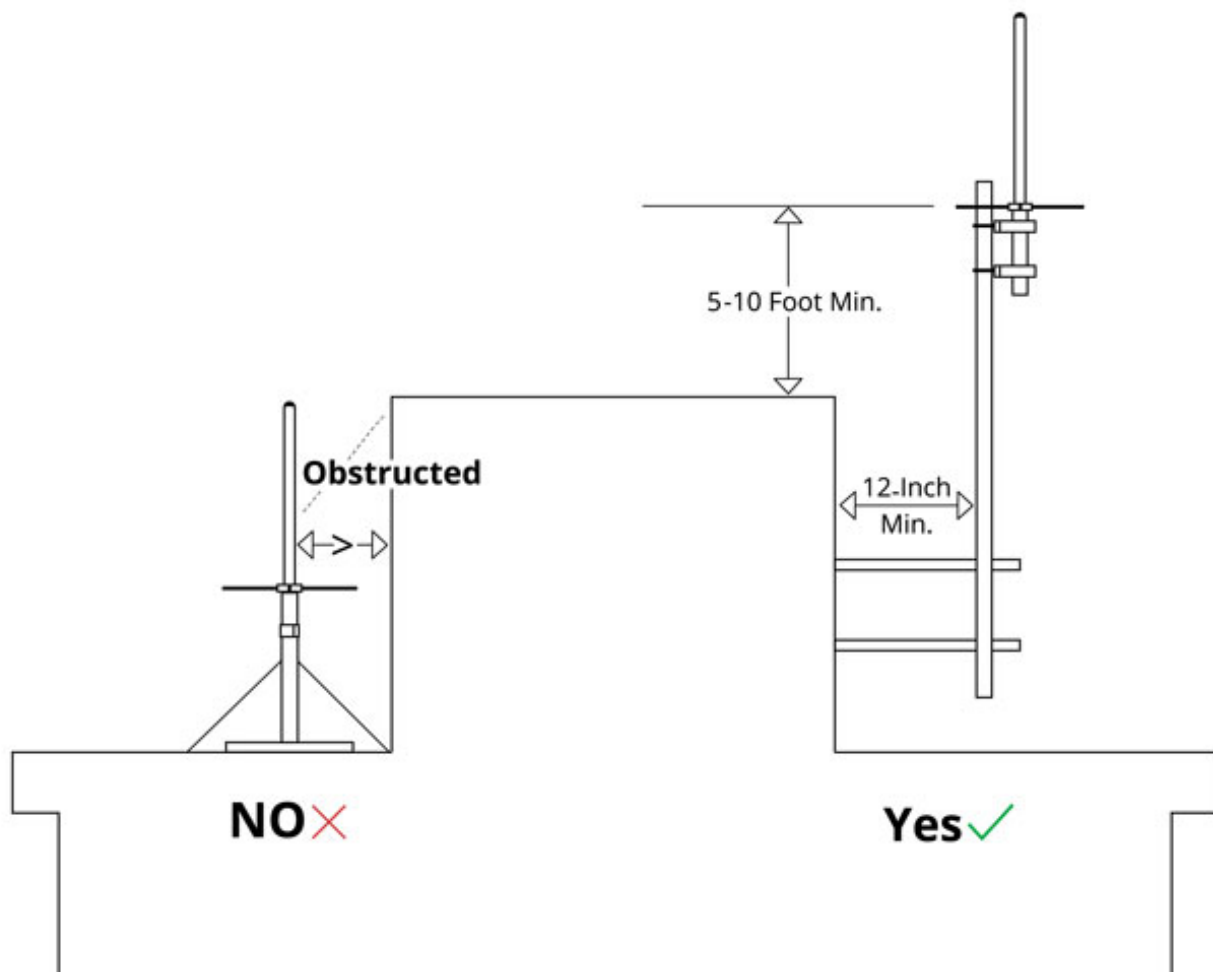


## CHOOSING AN INSTALL LOCATION

### 1 /

The location for the antenna installation should be chosen based on the best unobstructed view of the intended coverage area. This means that the antenna should be at least 12 inches away from any parapet, wall, or obstruction and the ground plane should be 5 to 10 feet above the roofline.

When mounting your High Gain Antenna, be sure to mount it so that there is no outside interference. (i.e. no power lines between the High Gain Antenna and the scoreboard, not a lot of electrical wires in the immediate vicinity of the antenna, and/or not on a side facing wall) Ideally, the placement of your antenna will have 360° visibility to the locations of nearby Subscribers.





## INSTALLING THE ANTENNA

This manual will walk you through the installation of the antenna. While care has been taken to consider the many scenarios for installation, some general information applies to all. Follow this guide as closely as possible to ensure proper installation.

**1 /**

Use the supplied mounting bracket with the set screw hardware, or mounting bracket and U-bolts if mounting on a pole. The antenna needs to be in direct line of sight with your scoreboard.

**2 /**

Connect the large end of the Antenna Interface Cable to the base of the High Gain Antenna by threading it on clockwise. Ensure that this connection is hand-tight.

**(See Figure 1)**

**3 /**

Feed the small end of the Antenna Interface Cable towards the LCD Keyboard Controller.

A hole through your press box structure can be used for this cable. A window opening can also be used for more of a temporary solution. The provided Interface Cable Extension can be used if the distance to the keyboard requires it.

**4 /**

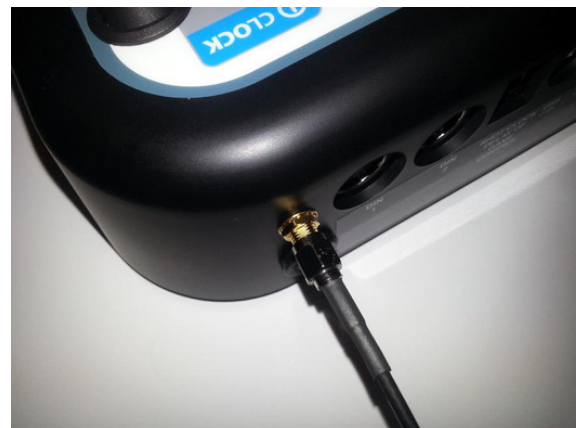
Connect the Antenna Interface Cable to the back of your LCD keyboard controller. This will be threaded onto the existing lug coming out of the back right side of the keyboard. **(See Figure 2)**

**5 /**

Test the installed system.



**Figure 1**



**Figure 2**

